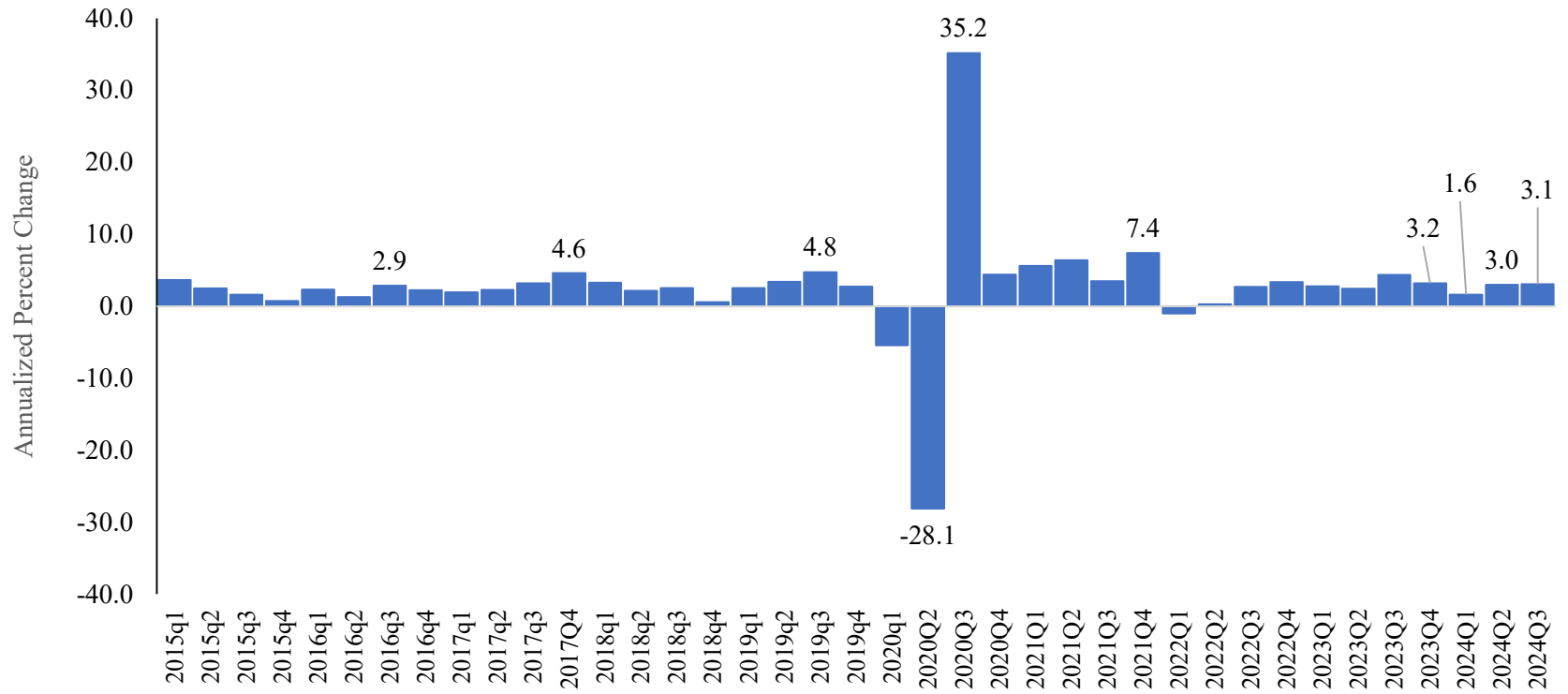


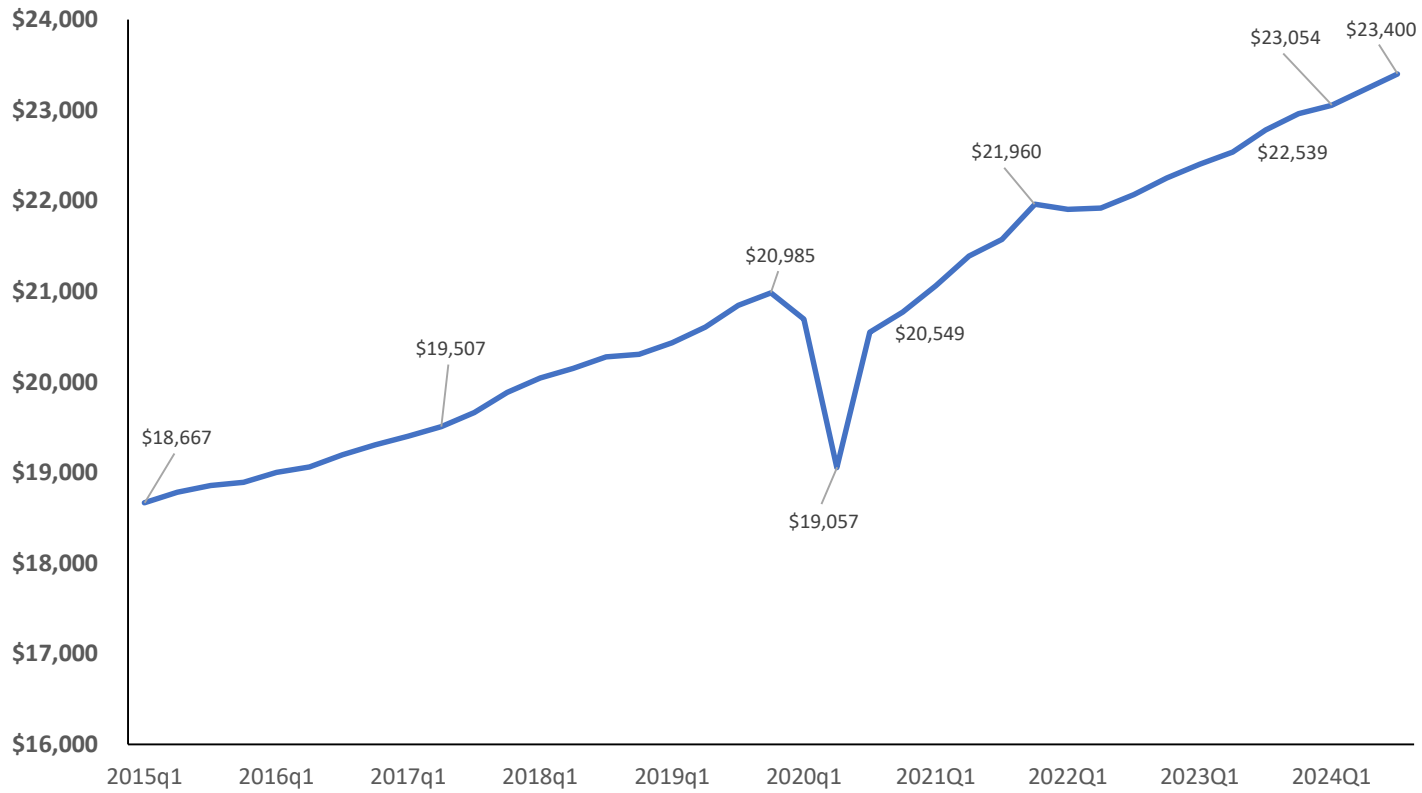
Annualized Percent Change in U.S.A Real GDP: 2015 Q1 to 2024 Q3
(Quarter-over-Previous-Quarter)



Source: bea.gov seasonally adjusted at annual rates

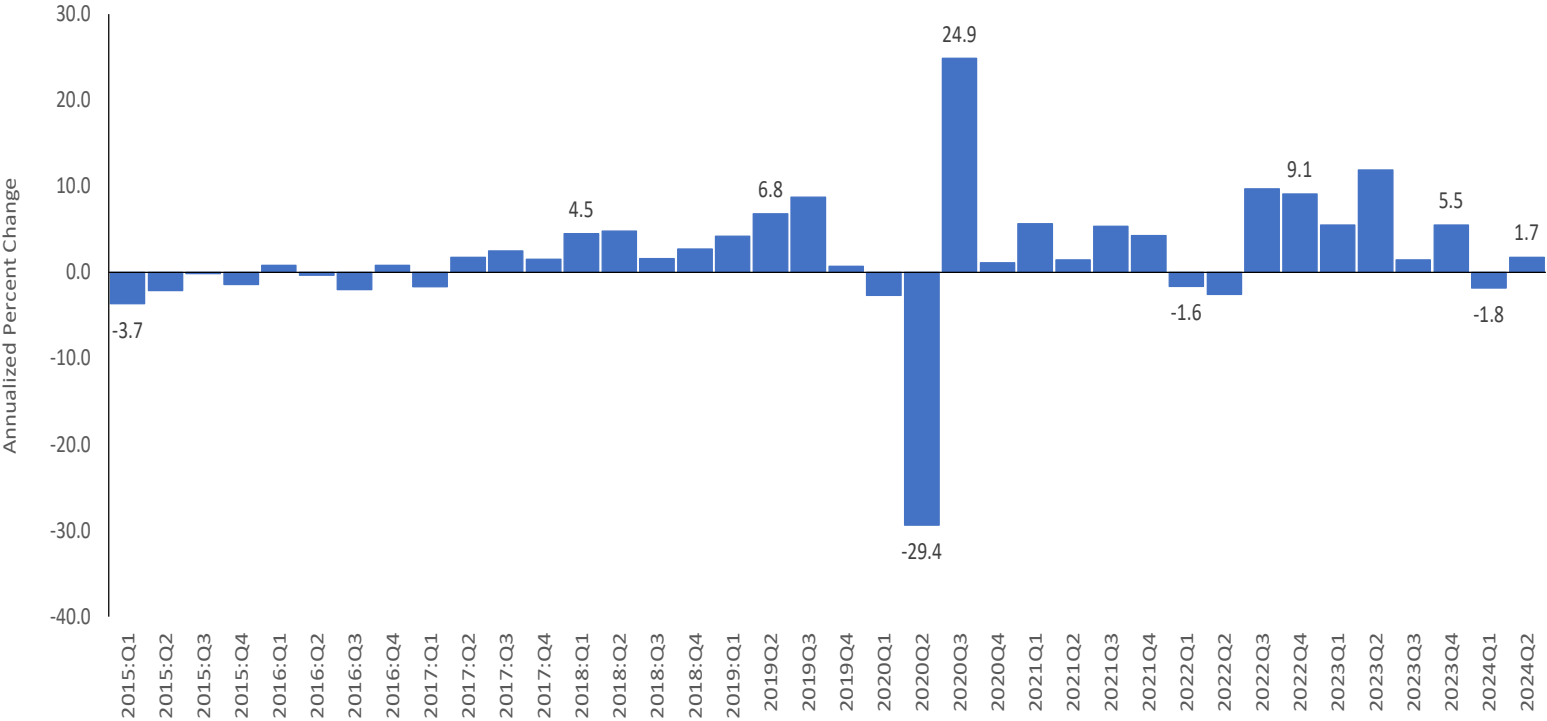
U.S. Real Gross Domestic Product: 2015 Q4 to 2024 Q3

(billions of chained 2017 dollars)



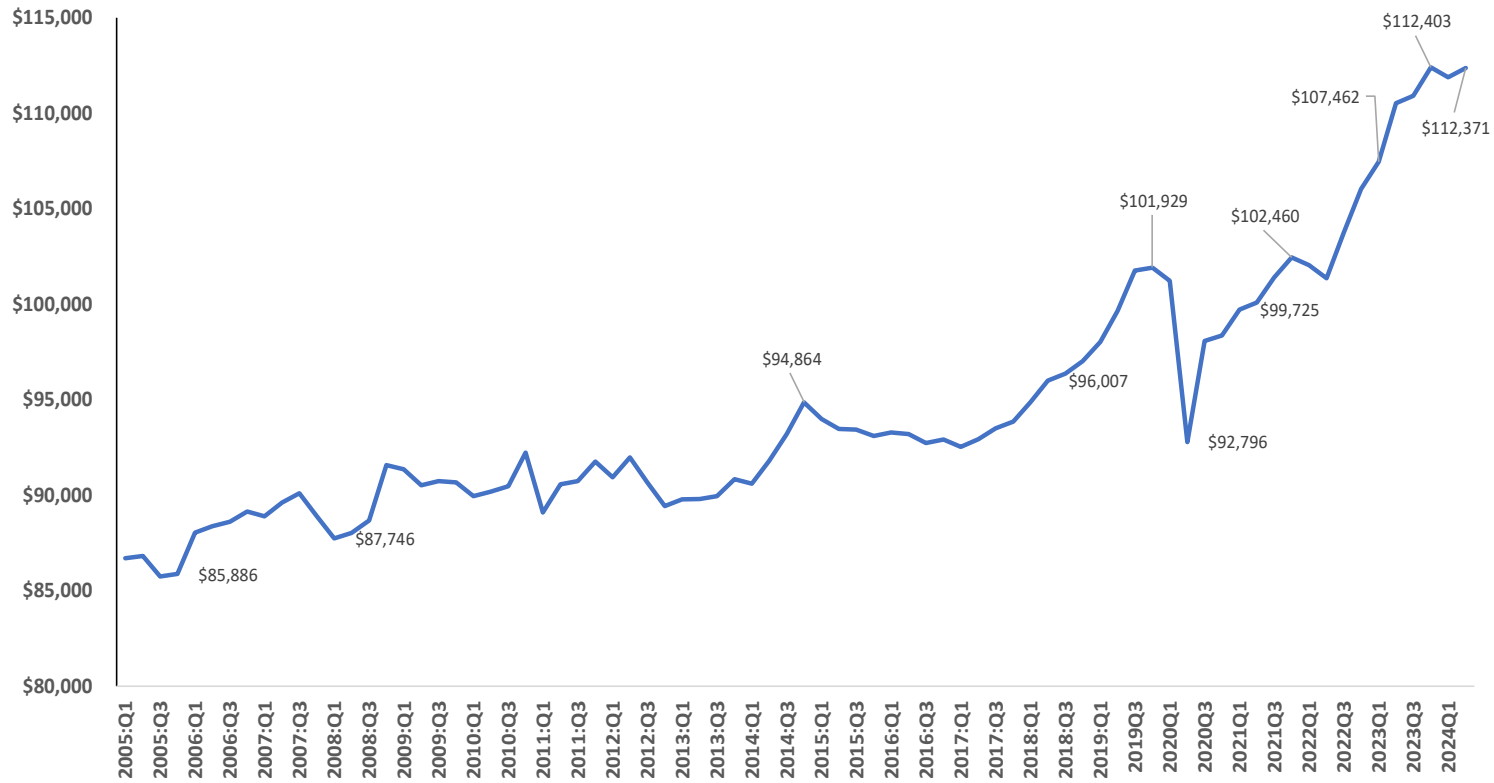
Source: GDP in billions of chained 2017 dollars, retrieved from [bea.gov](https://www.bea.gov).

Annualized Percent Change in N.M. Real GDP 2014Q1 to 2024Q2
(Quarter to Quarter)



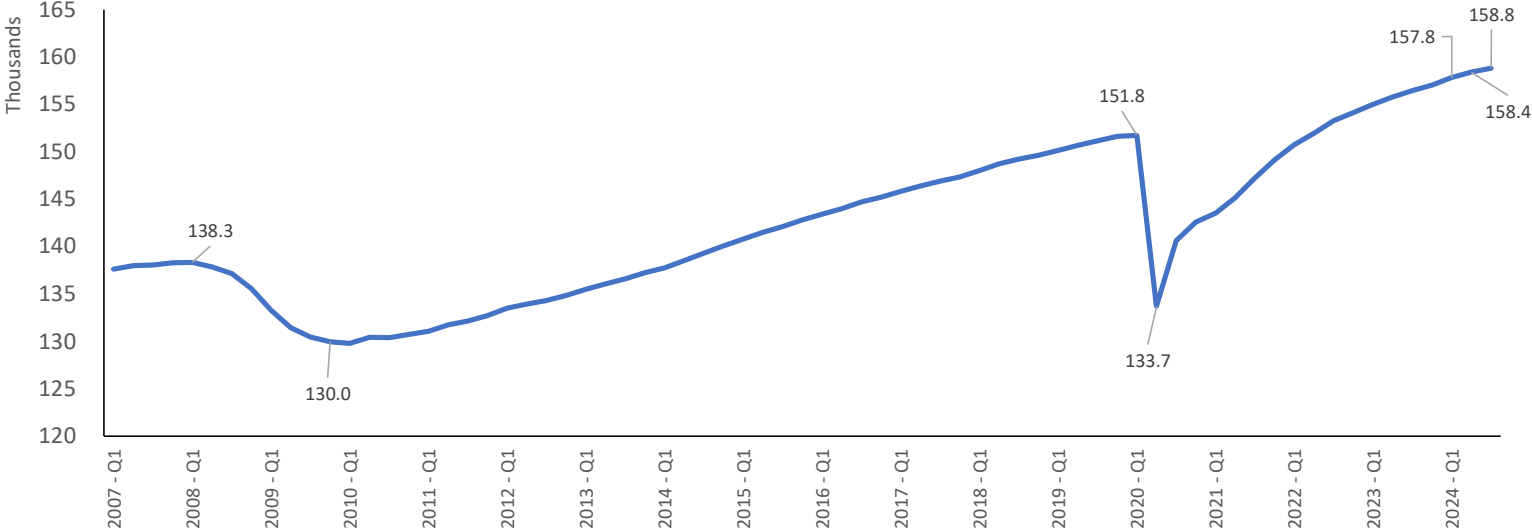
Source: bea.gov

New Mexico Real Gross Domestic Product 2014Q1-2024Q2



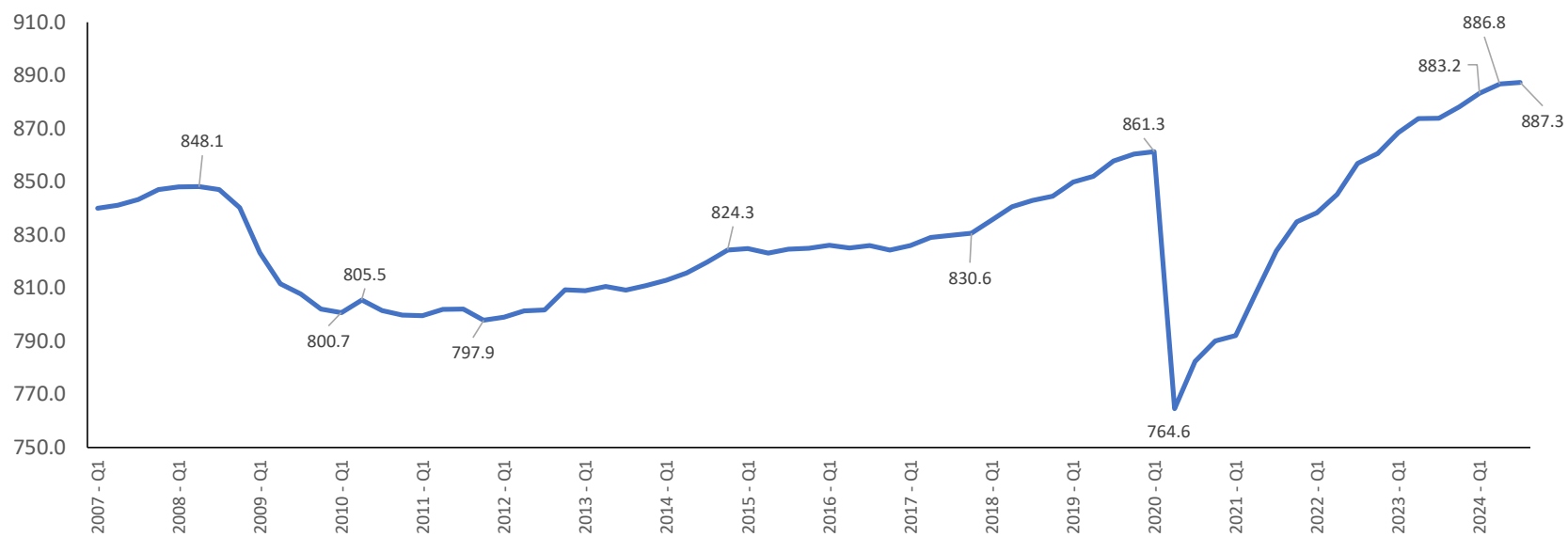
Source: Historical Values from the Bureau of Economic Analysis

U.S. Total Non-Employment: 2007Q1 to 2024Q3
(1,000s of jobs)



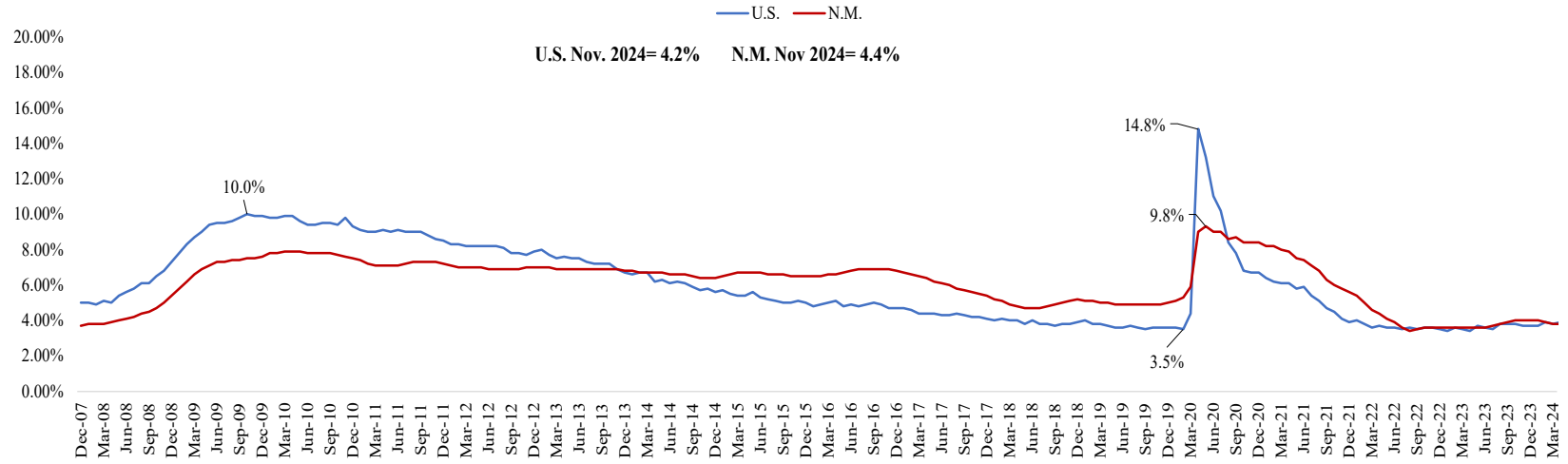
Source: Bureau of Labor Statistics

N.M.'s Quarterly Total Non-Employment: 2007Q1 to 2024Q3
(1,000s of jobs)



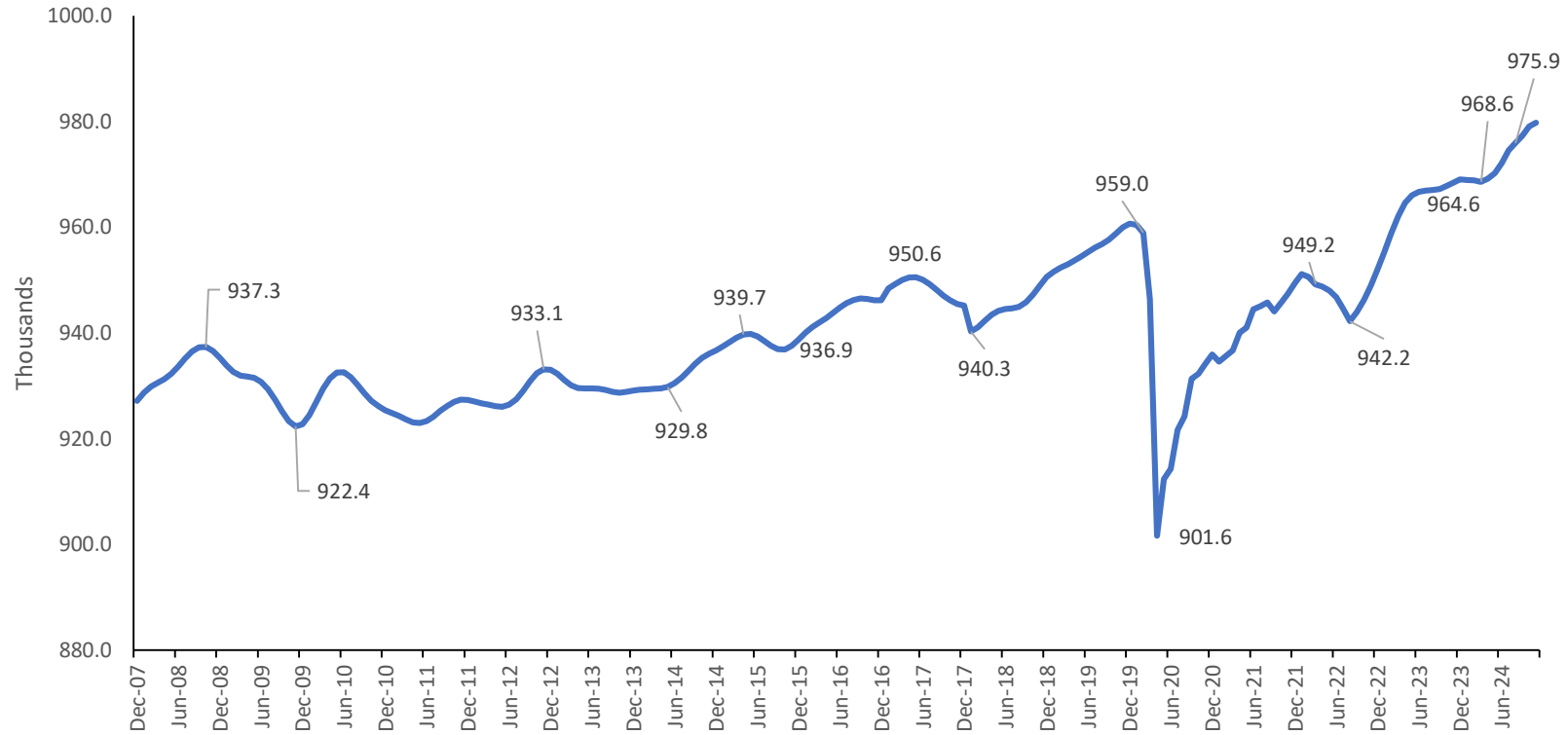
Source: Bureau of Labor Statistics

U.S. and N.M. Unemployment Rate (percent) : December 2007 to December 2024



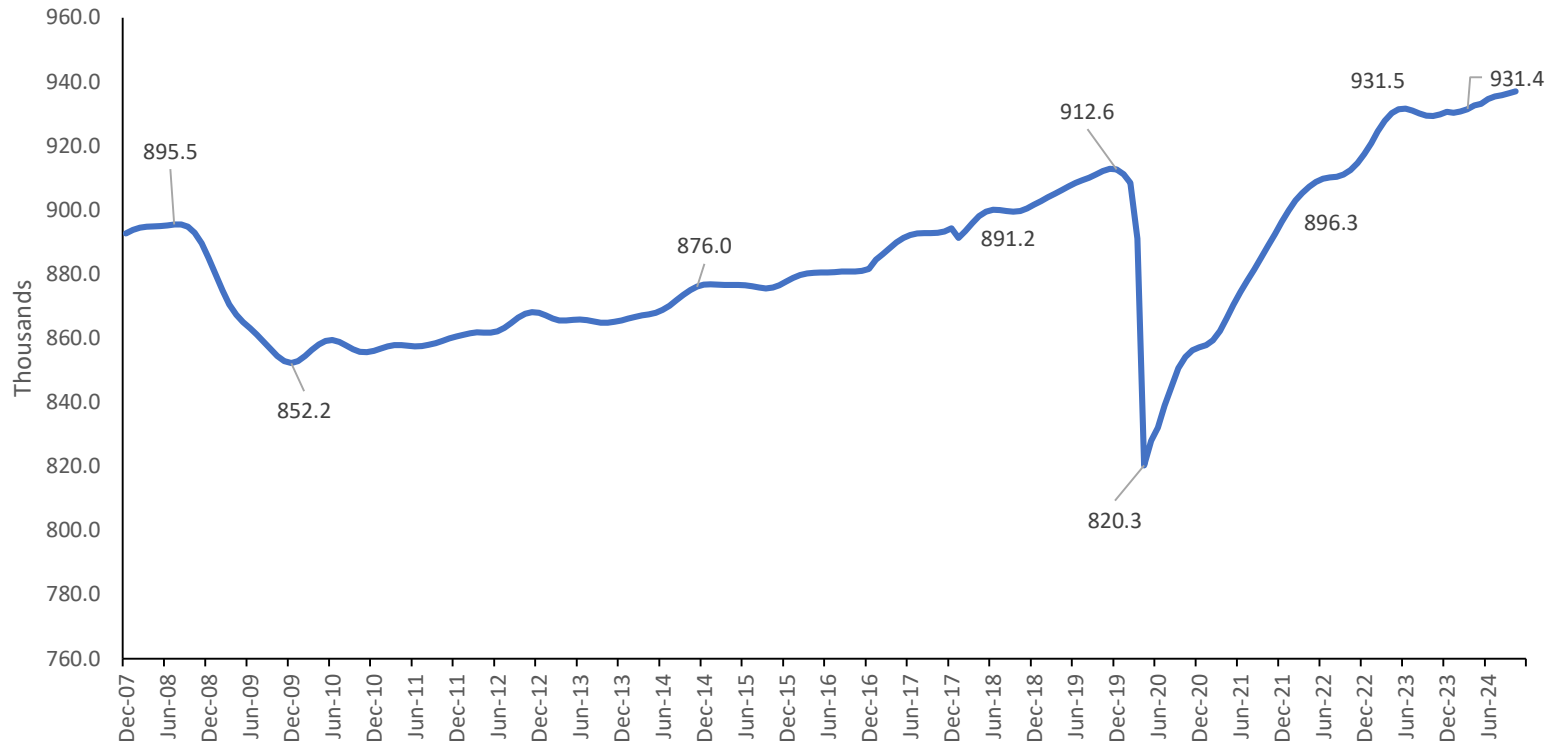
Source: bls.gov, seasonally adjusted

N.M. Labor Force: December 2007 to Present



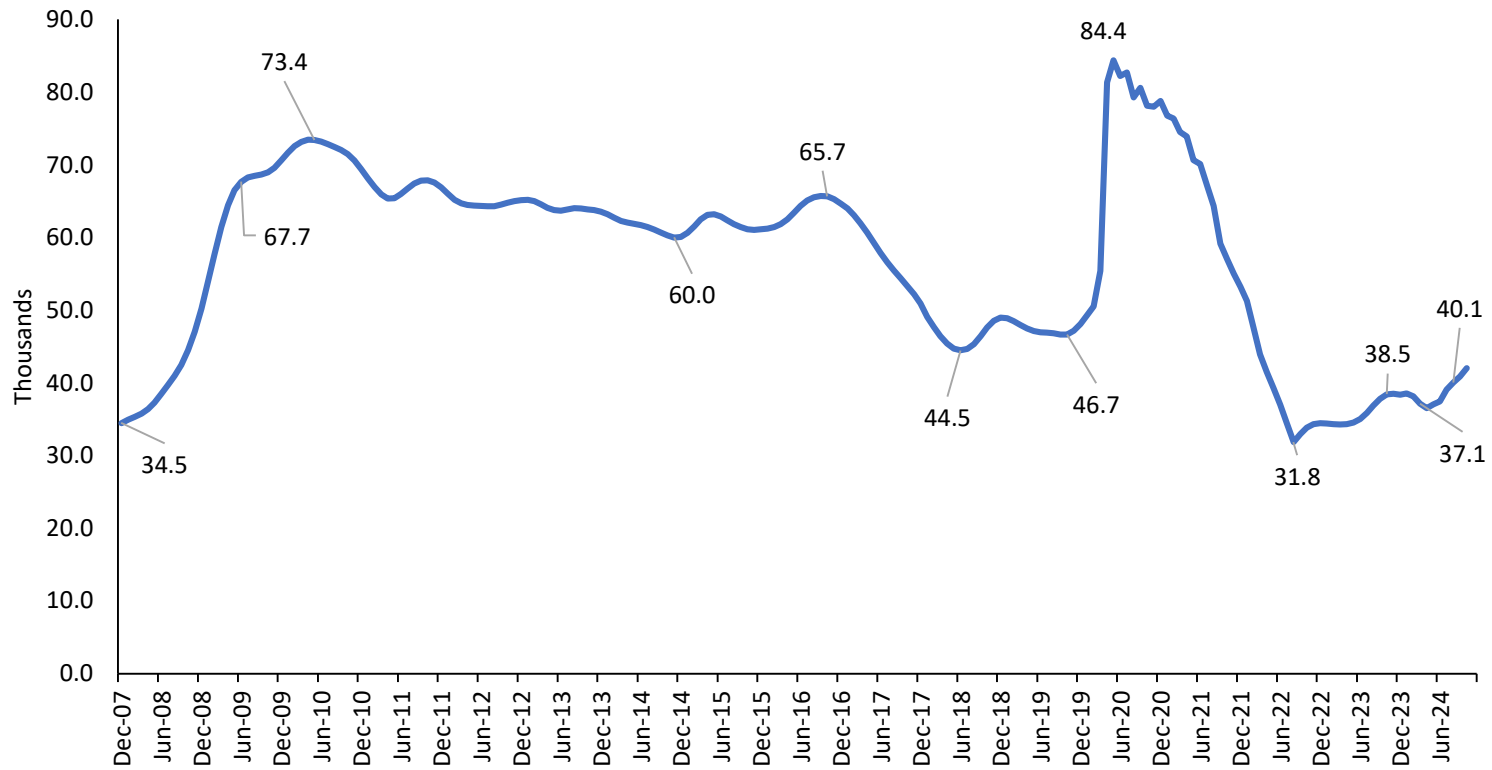
Source: U.S. Bureau of Labor Statistics, Local Area Unemployment Statistics

N.M. Employed: December 2007 to Present



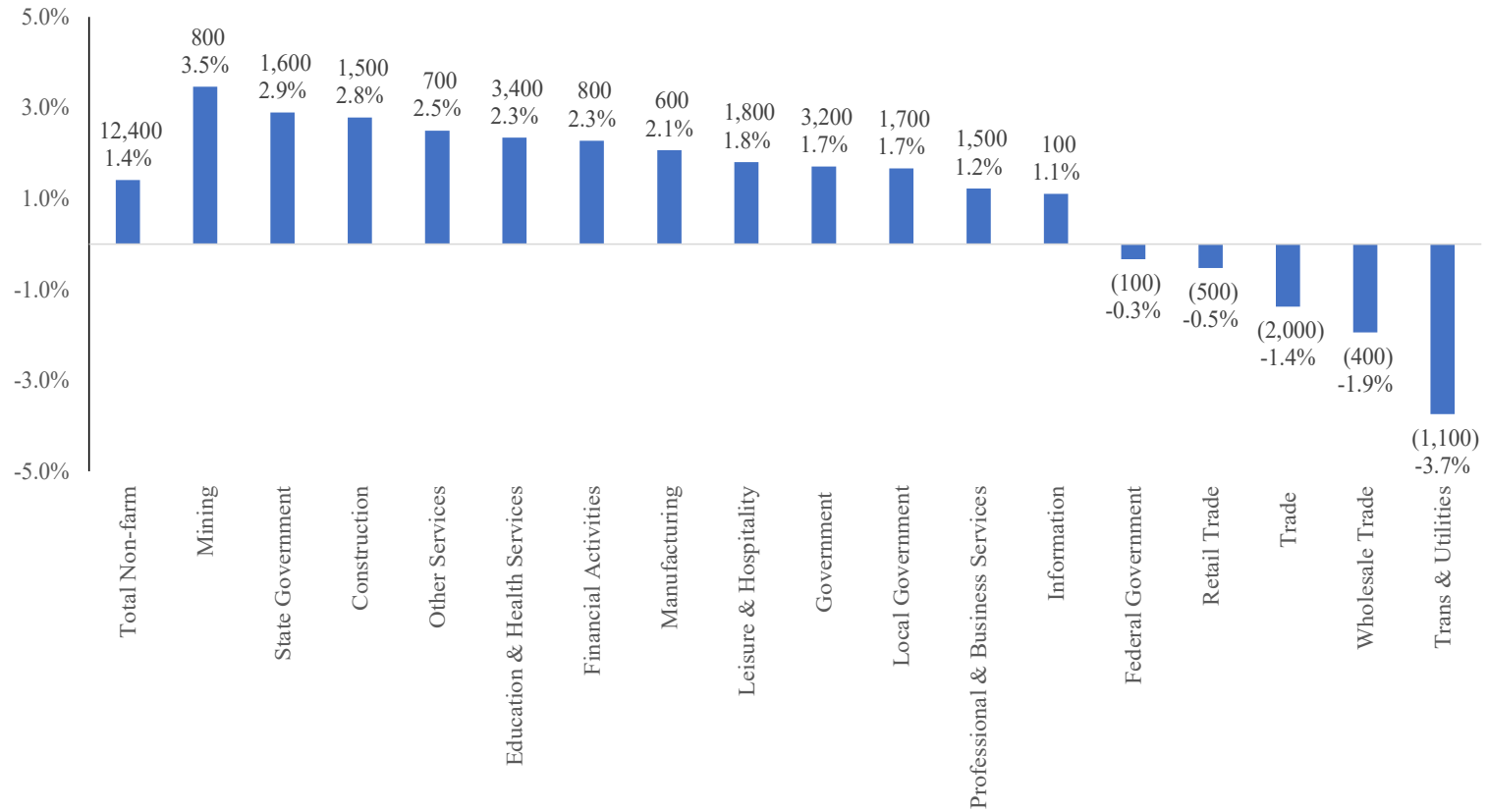
Source: U.S. Bureau of Labor Statistics, Local Area Unemployment Statistics

N.M. Total Unemployed: December 2007 to Present



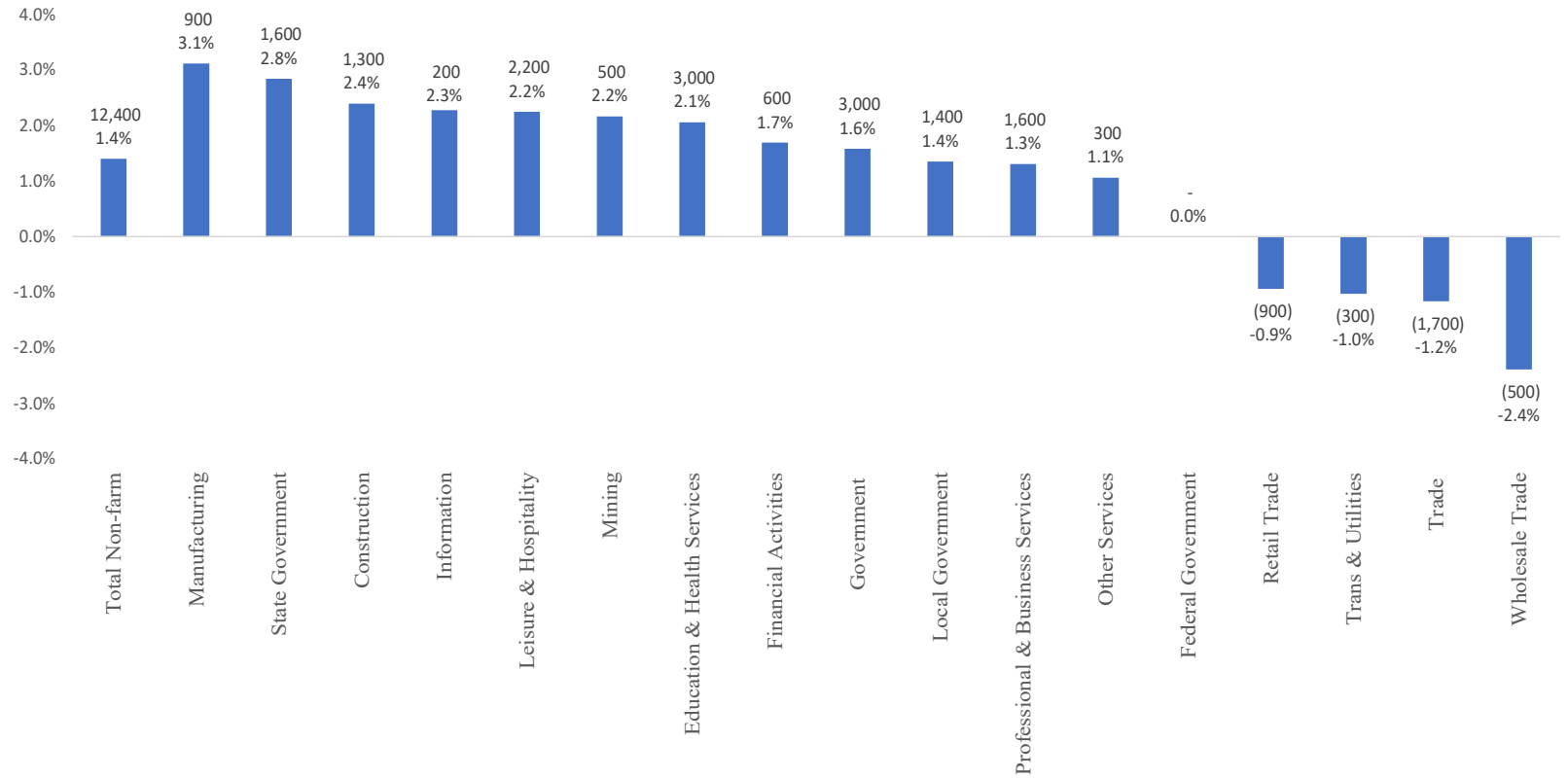
Source: U.S. Bureau of Labor Statistics, Local Area Unemployment Statistics

**Percent Change and Level Change in Non-Farm Employment in N.M. by Sector
January 2020 to November 2024**



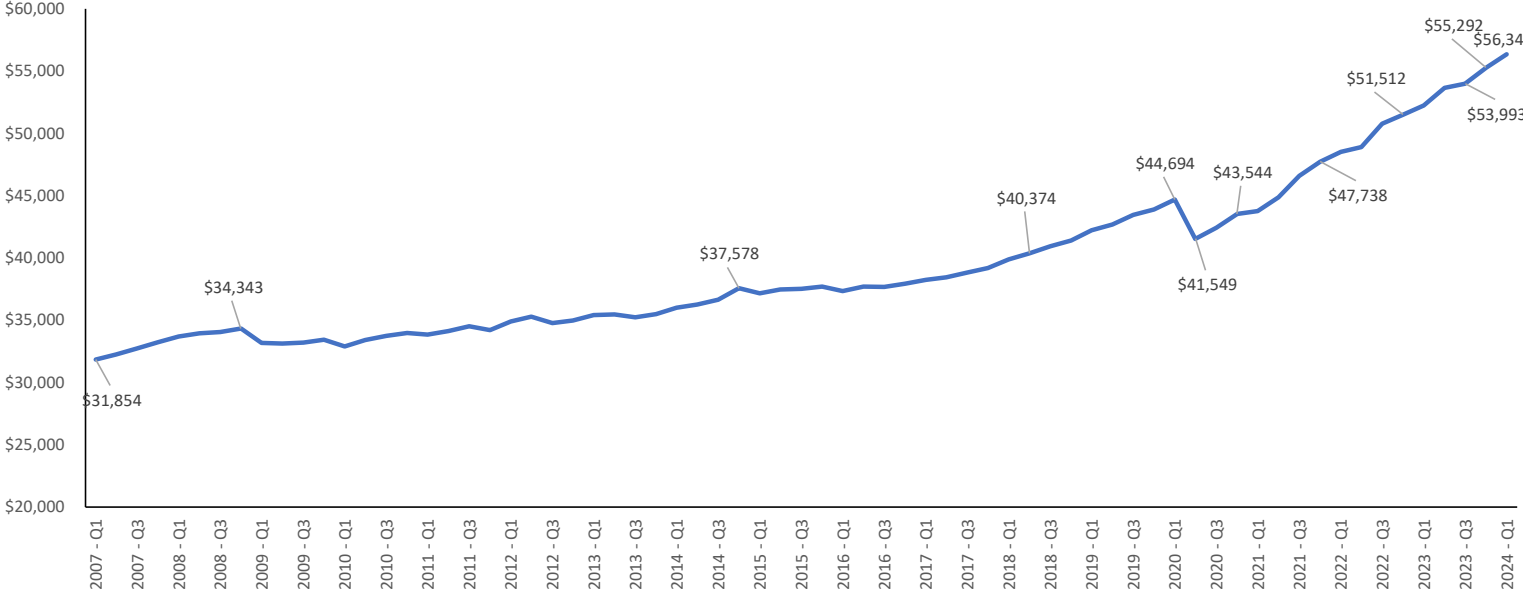
Source: bls.gov, CES seasonally adjusted

**Percent Change and Level Change in Non-Farm Employment in N.M. by Sector
November 2023 to November 2024**



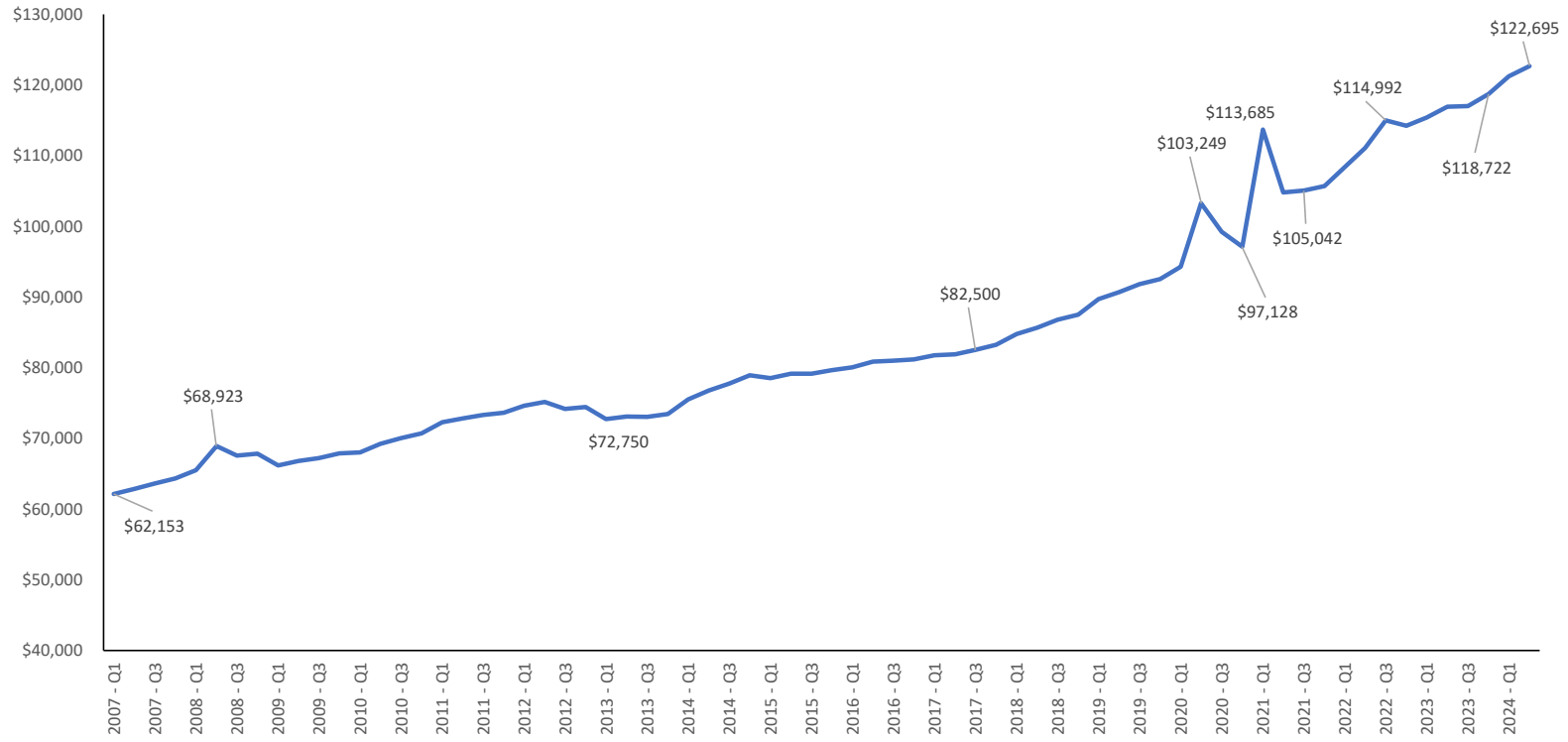
Source: bls.gov, CES not seasonally adjusted

**N.M. Wages and Salaries: 2007 Q1 to Present
(in thousands)**



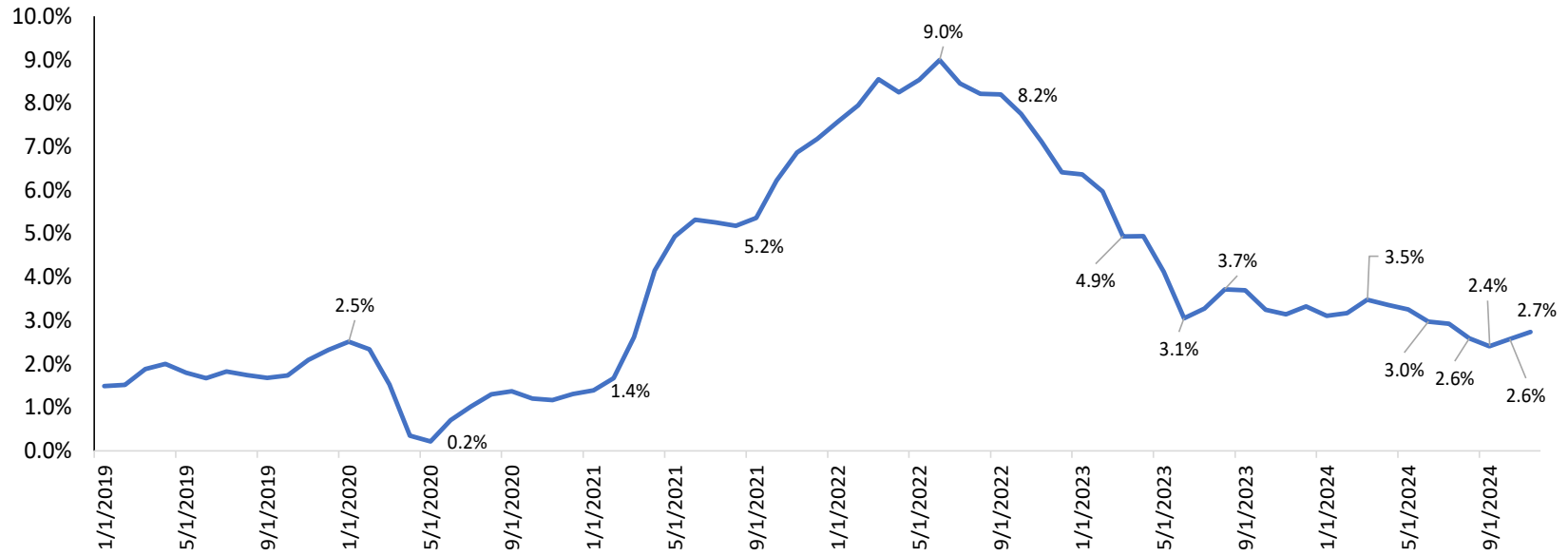
Source: Retrieved from bea.gov.

N.M. Personal Income: 2007 Q1 to Present (in millions)



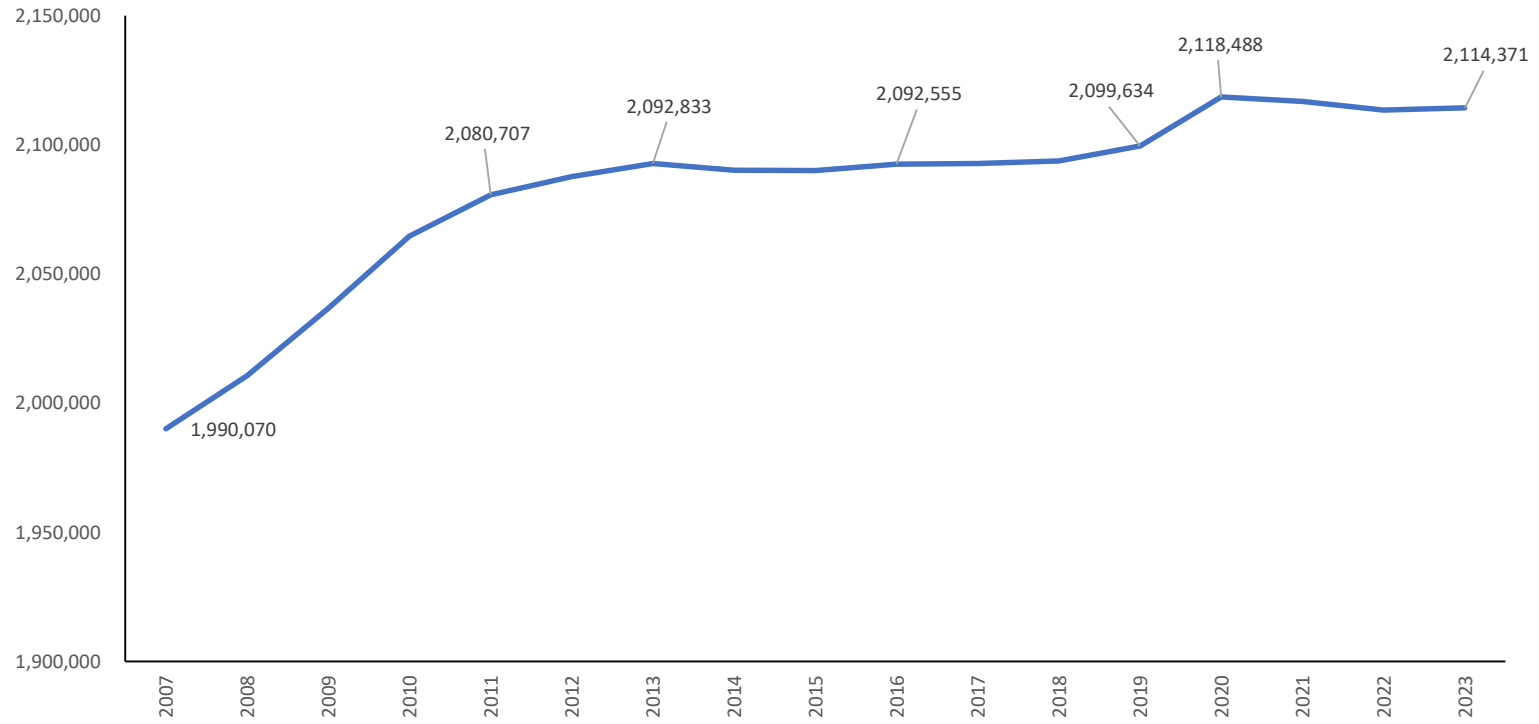
Source: Retrieved from bea.gov.

Consumer Price Index (CPI-all items) Year-over-year Change
January 2019 to Present



Source: Bureau of Labor Statistics

N.M. Resident Population: 2007 to 2023



Source: Retrieved from U.S. Census Bureau