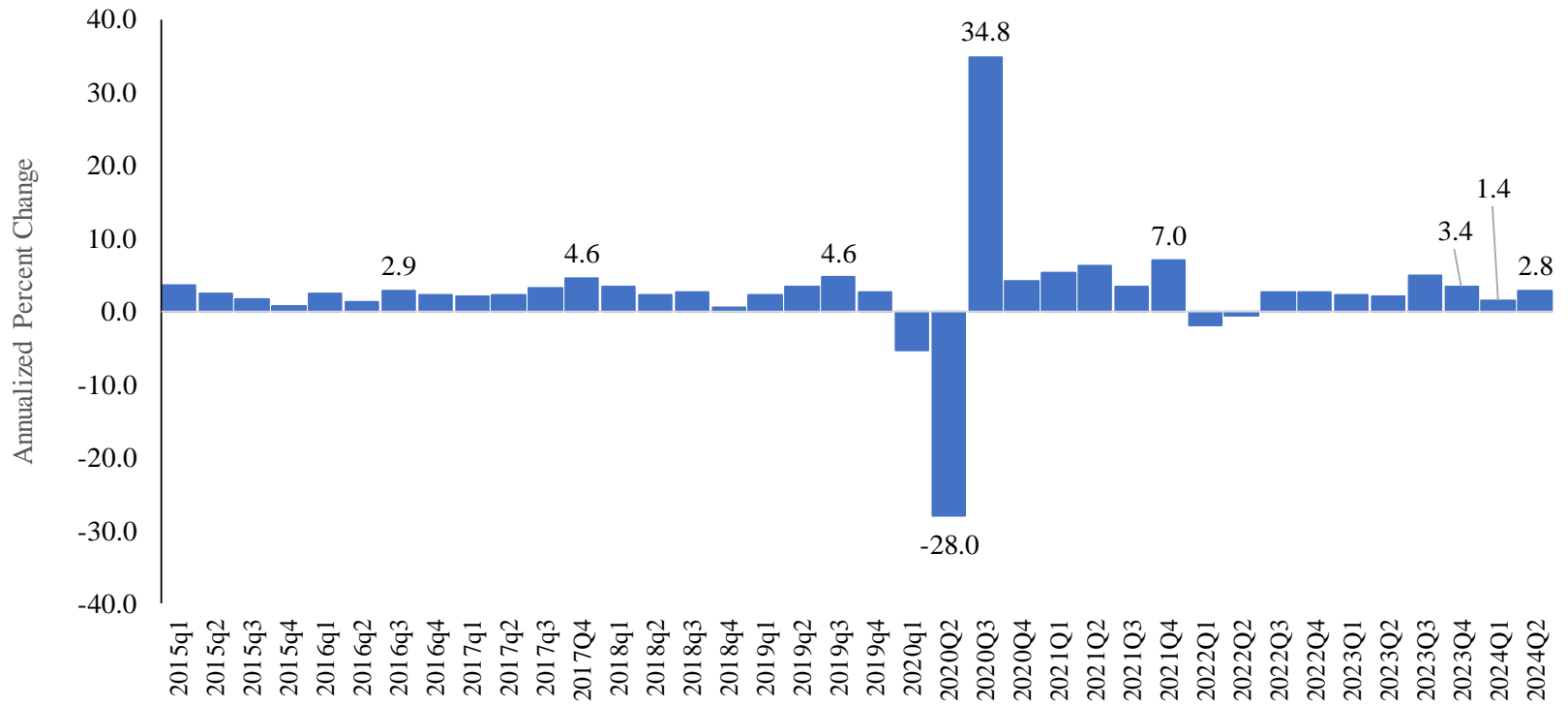


**Annualized Percent Change in U.S.A Real GDP: 2015 Q1 to 2024 Q2**  
**(Quarter-over-Previous-Quarter)**



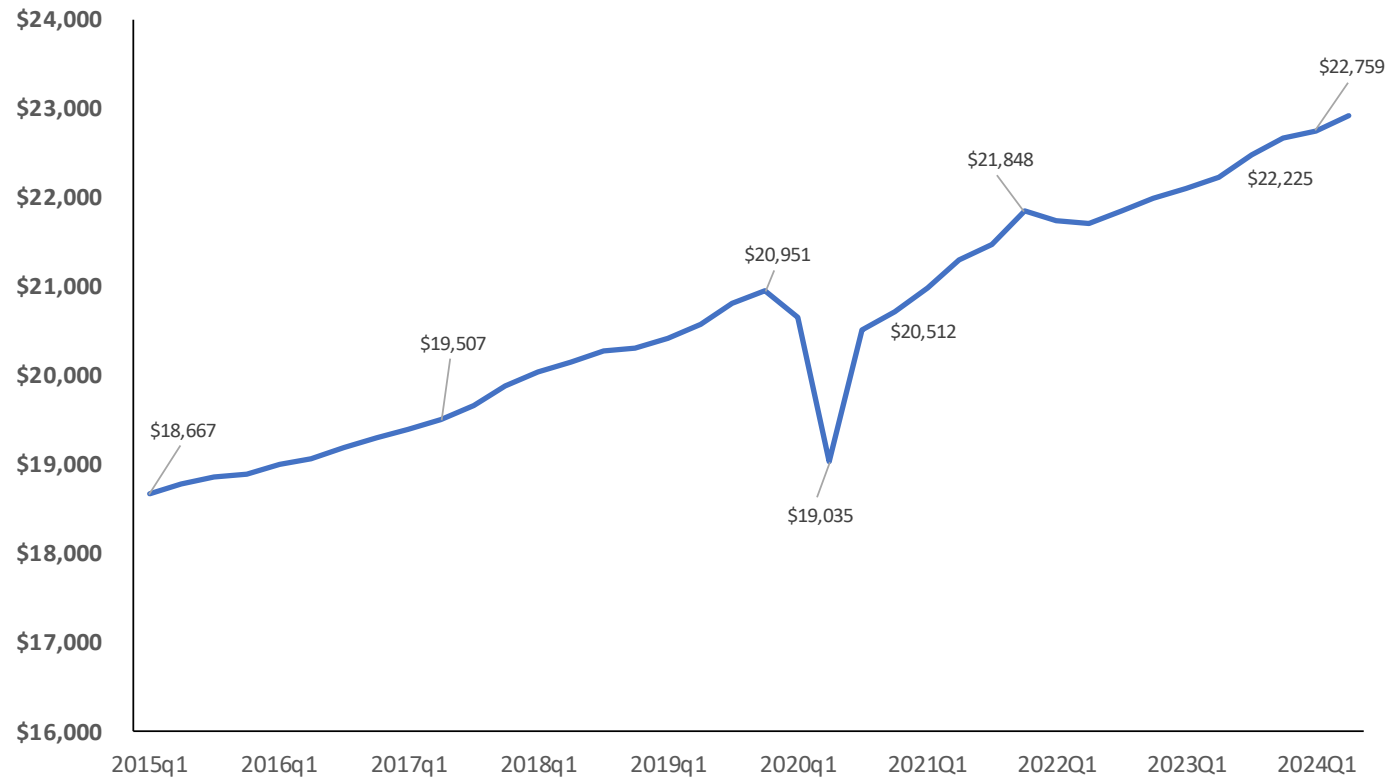
Source: bea.gov seasonally adjusted at annual rates

---

## U.S. Real Gross Domestic Product: 2015 Q4 to 2024 Q2

(billions of chained 2017 dollars)

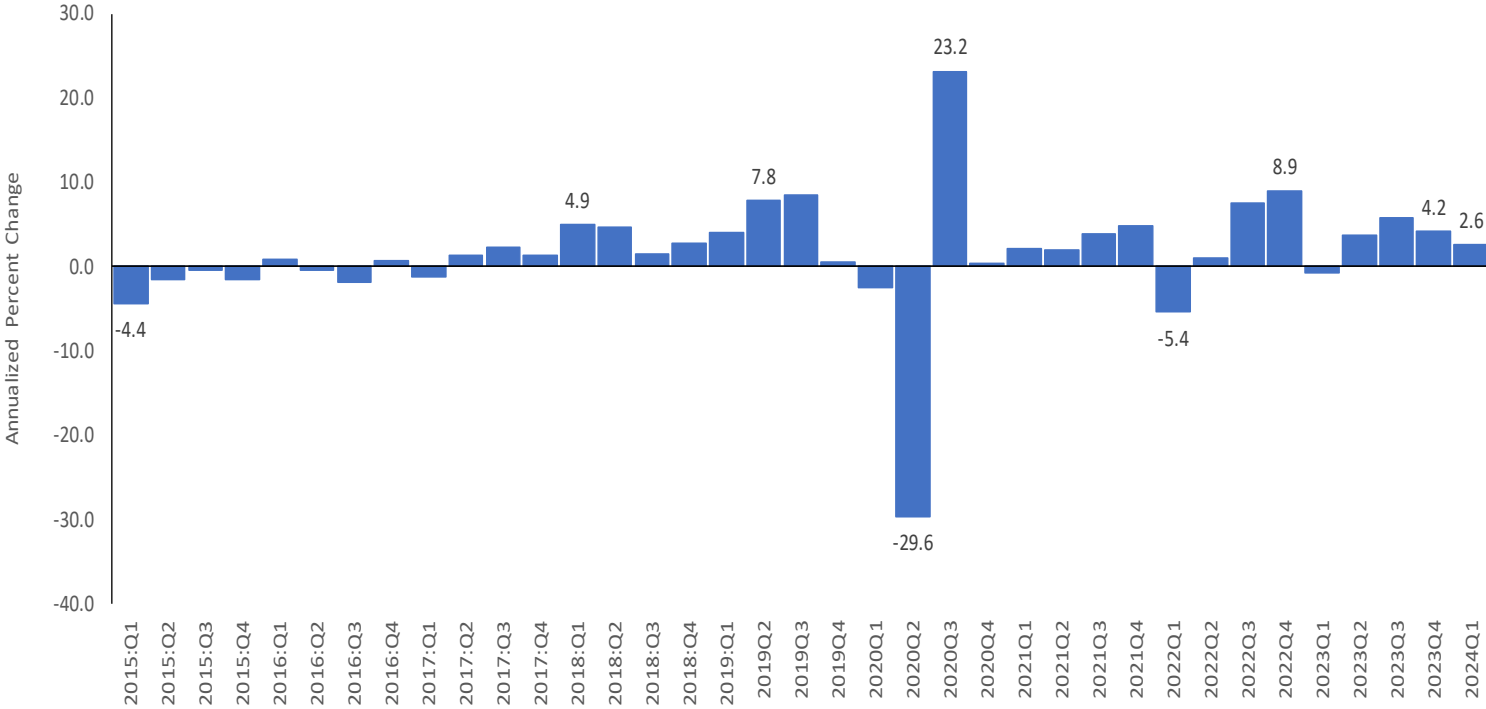
---



---

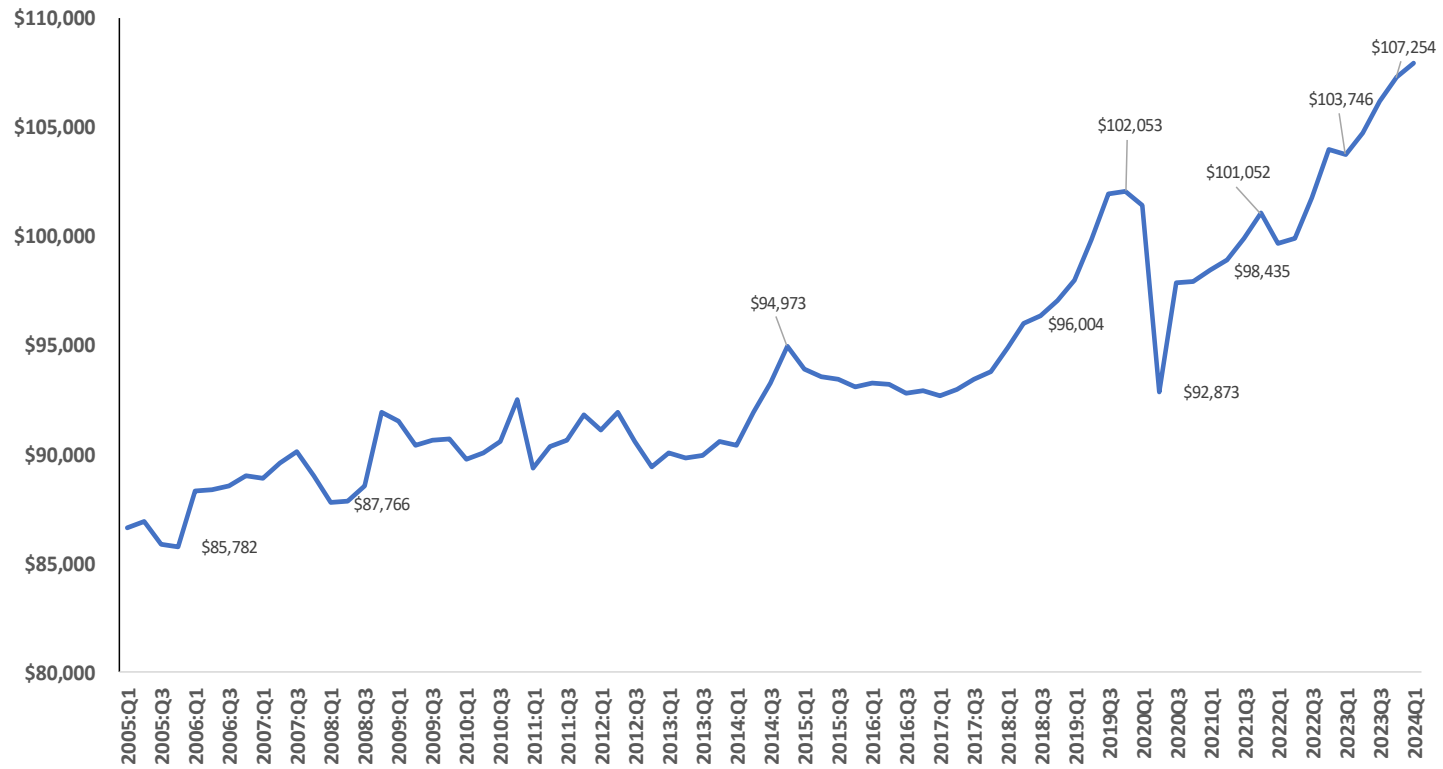
Source: GDP in billions of chained 2017 dollars, retrieved from [bea.gov](https://www.bea.gov).

**Annualized Percent Change in N.M. Real GDP 2014Q1 to 2024Q1**  
**(Quarter to Quarter)**



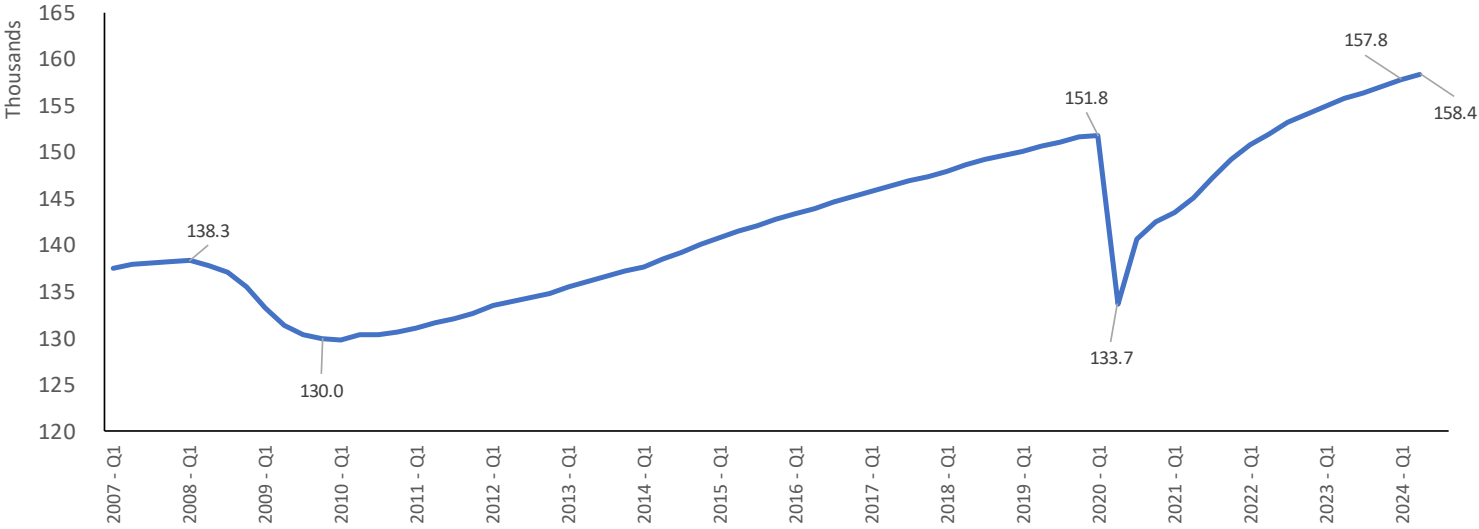
Source: bea.gov

## New Mexico Real Gross Domestic Product 2014Q1-2024Q1



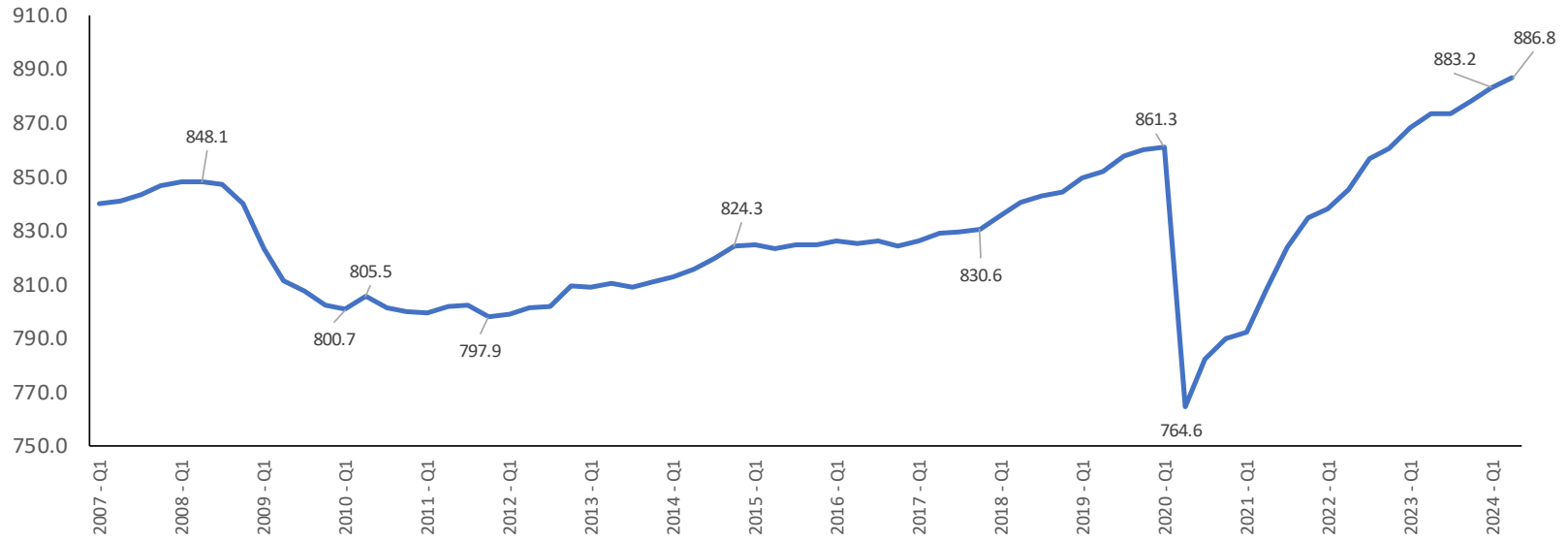
Source: Historical Values from the Bureau of Economic Analysis

**U.S. Total Non-Employment: 2007Q1 to 2024Q2**  
**(1,000s of jobs)**



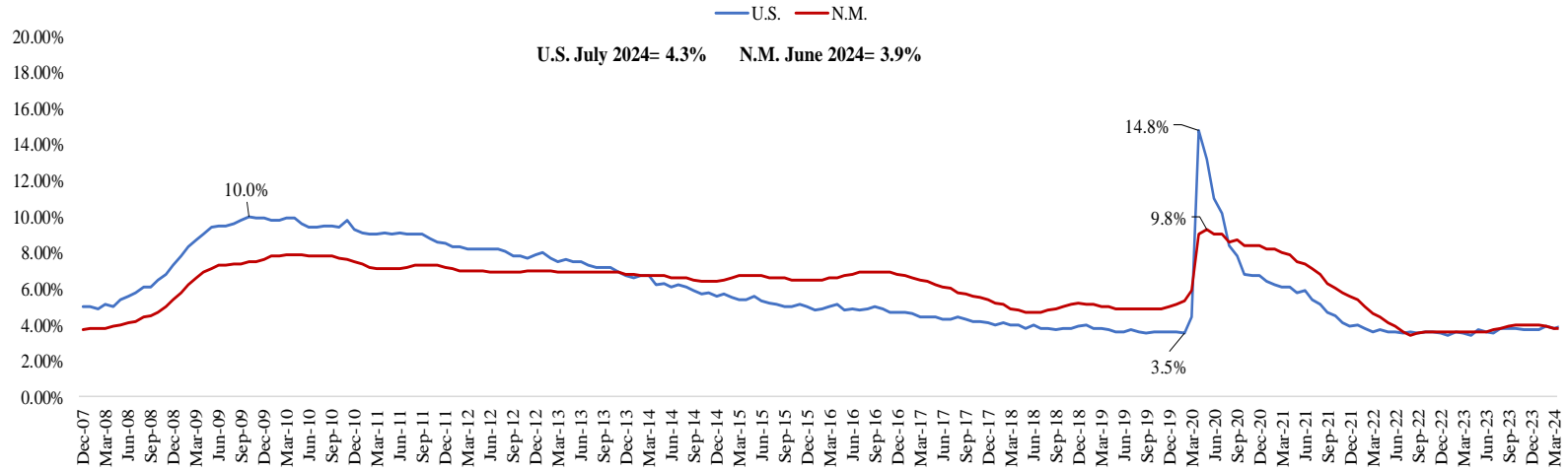
Source: Bureau of Labor Statistics

**N.M.'s Quarterly Total Non-Employment: 2007Q1 to 2024Q2**  
**(1,000s of jobs)**



Source: Bureau of Labor Statistics

U.S. and N.M. Unemployment Rate (percent) : December 2007 to July 2024



Source: bls.gov, seasonally adjusted

---

**N.M. Labor Force: December 2007 to Present**

---



---

**Source: U.S. Bureau of Labor Statistics, Local Area Unemployment Statistics**

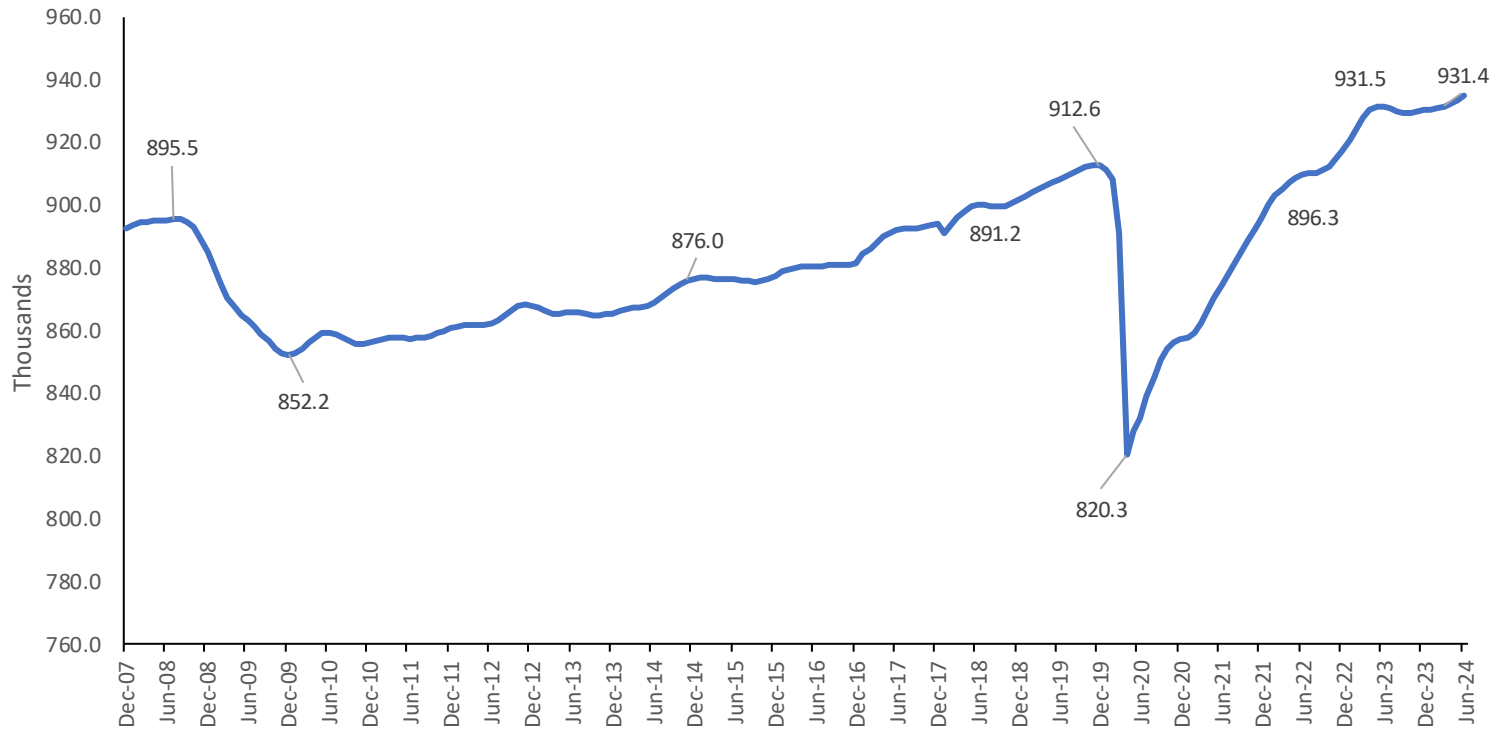
---



---

**N.M. Employed: December 2007 to Present**

---



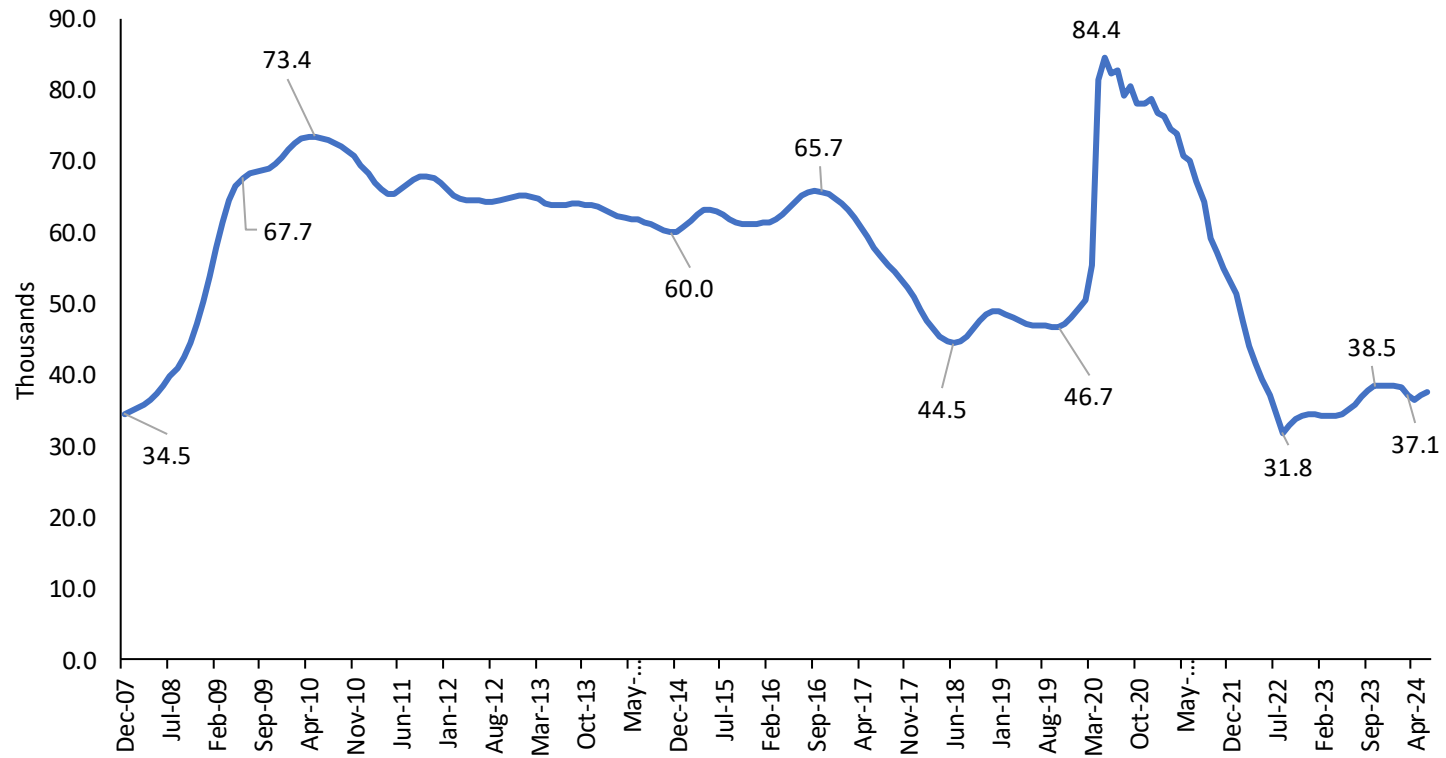
---

**Source: U.S. Bureau of Labor Statistics, Local Area Unemployment Statistics**

---

## N.M. Total Unemployed: December 2007 to Present

---

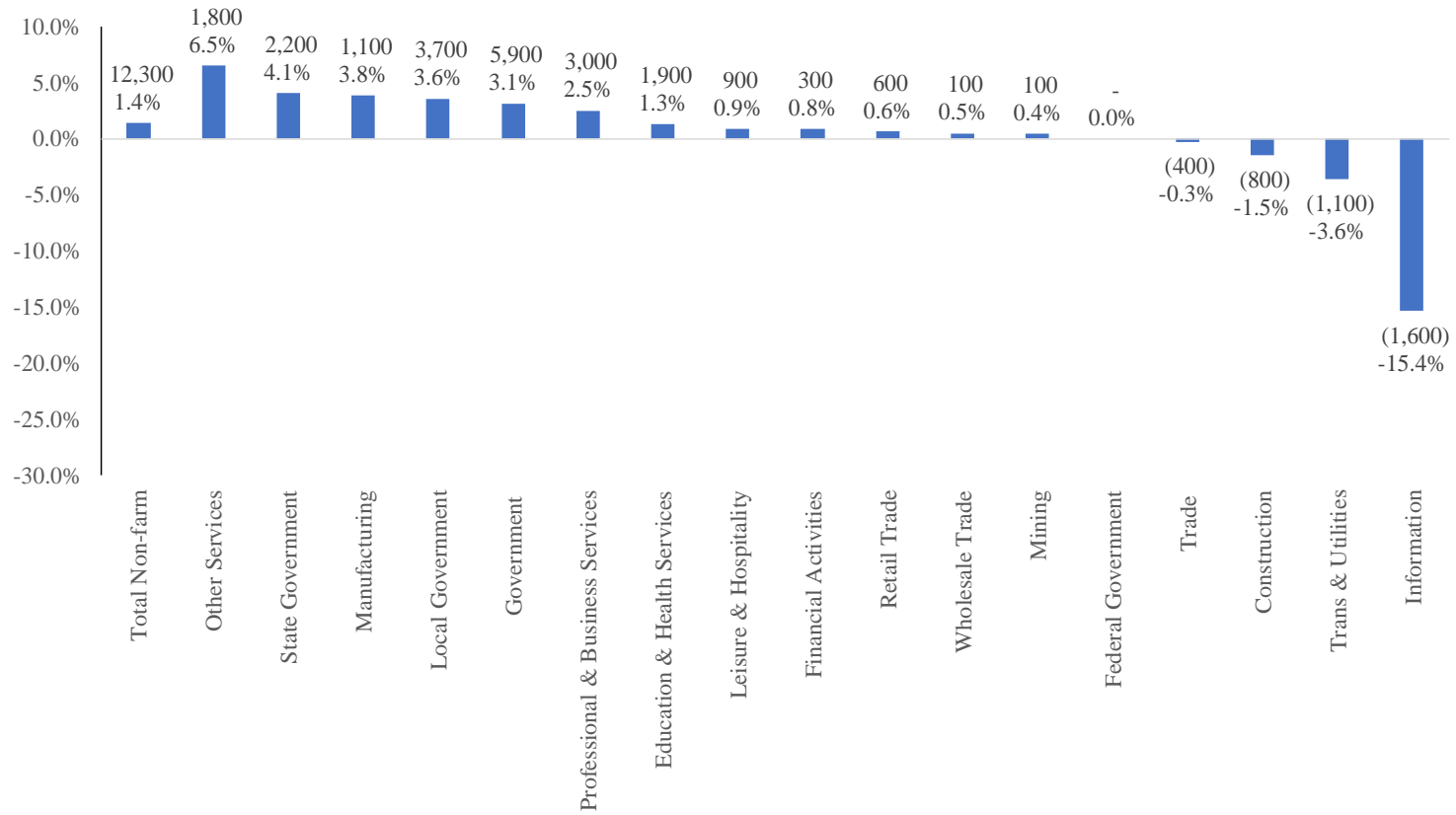


---

Source: U.S. Bureau of Labor Statistics, Local Area Unemployment Statistics

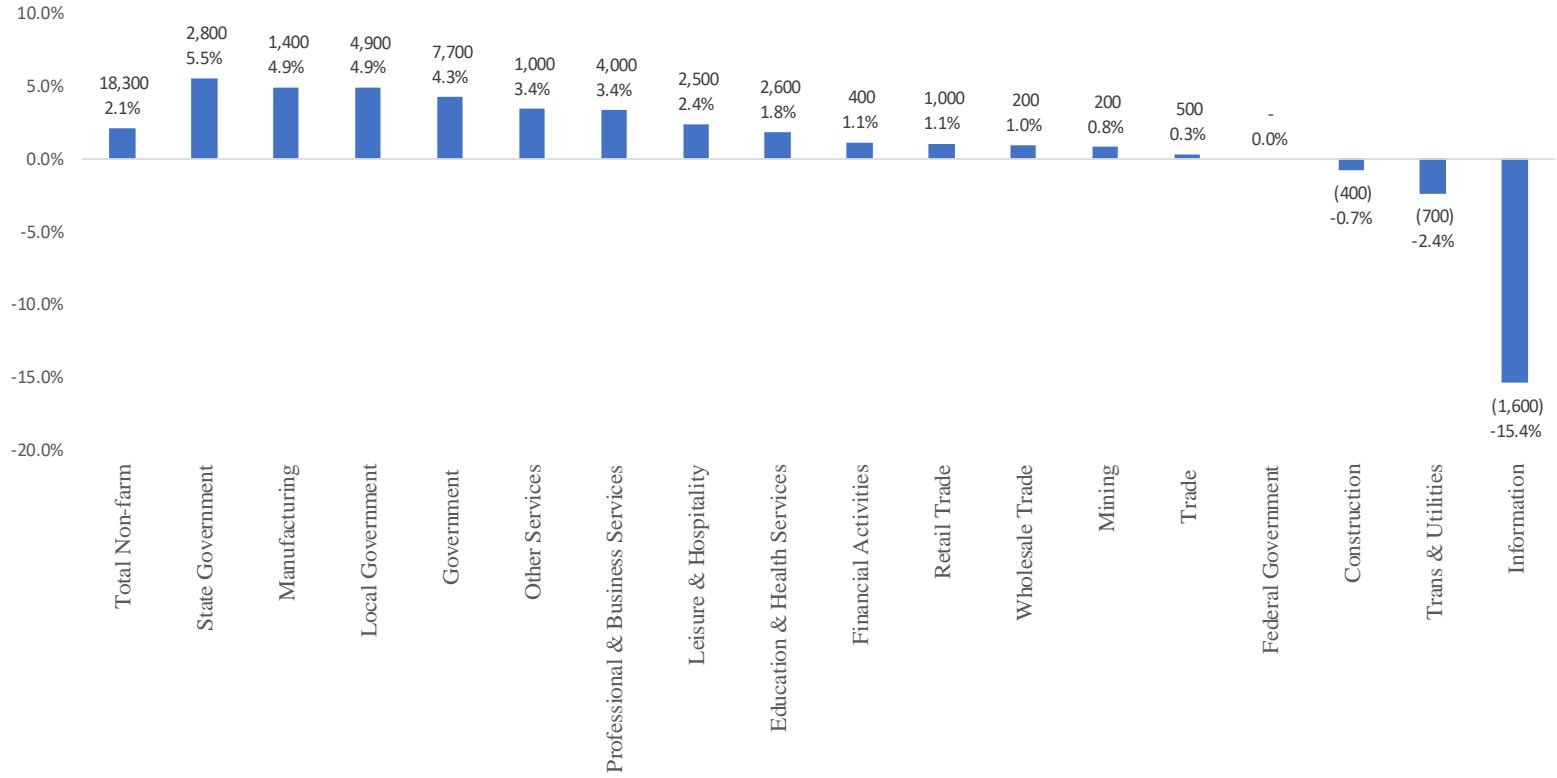
---

**Percent Change and Level Change in Non-Farm Employment in N.M. by Sector  
June 2023 to June 2024**



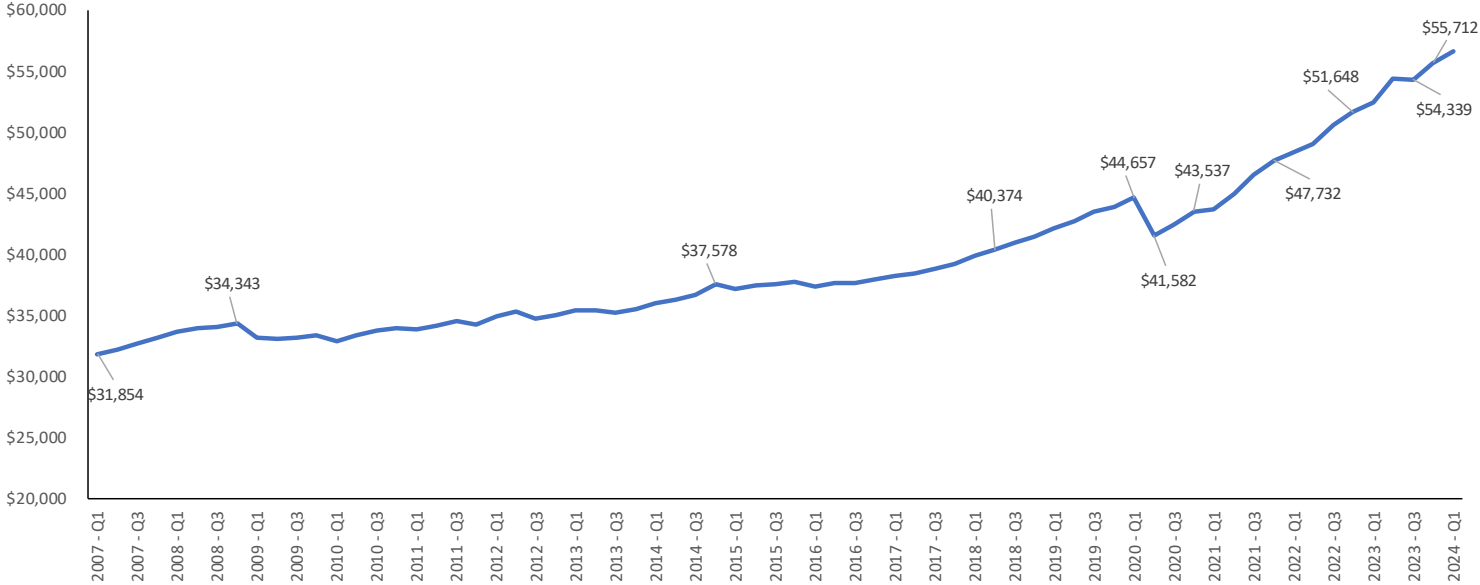
Source: bls.gov, CES seasonally adjusted

**Percent Change and Level Change in Non-Farm Employment in N.M. by Sector  
June 2023 to June 2024**



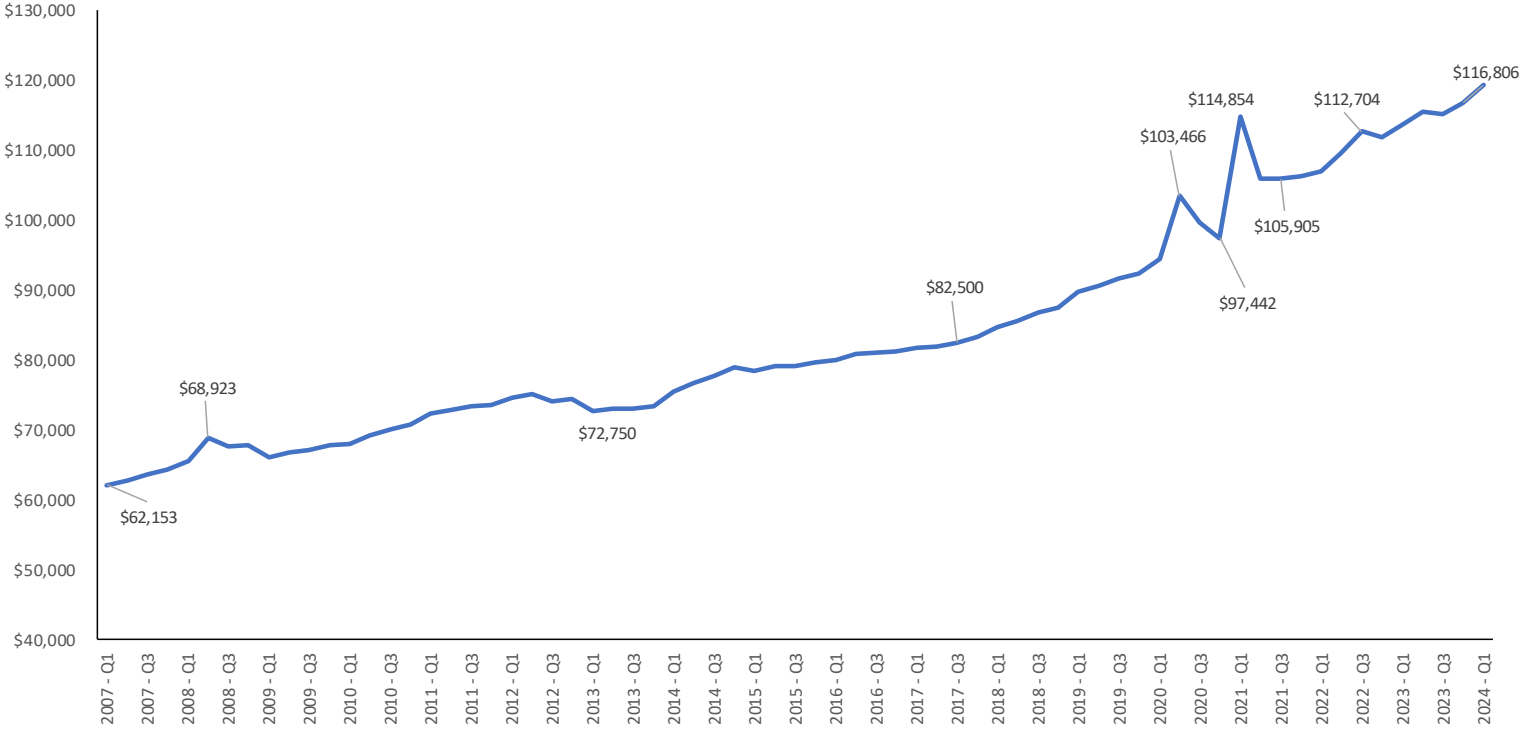
Source: bls.gov, CES not seasonally adjusted

**N.M. Wages and Salaries: 2007 Q1 to Present**  
**(in thousands)**



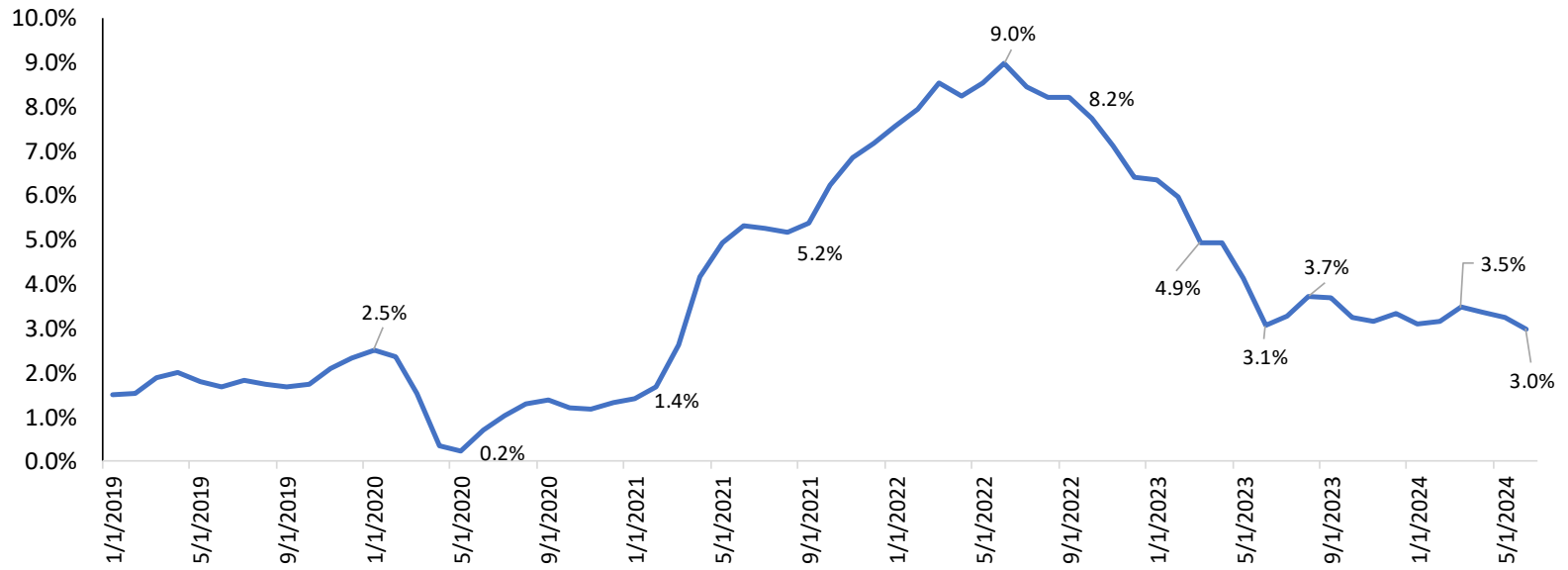
Source: Retrieved from [bea.gov](http://bea.gov).

**N.M. Personal Income: 2007 Q1 to Present**  
**(in millions)**



Source: Retrieved from bea.gov.

**Consumer Price Index (CPI-all items) Year-over-year Change  
January 2019 to Present**



Source: Bureau of Labor Statistics